



ETHER LINK USER MANUAL

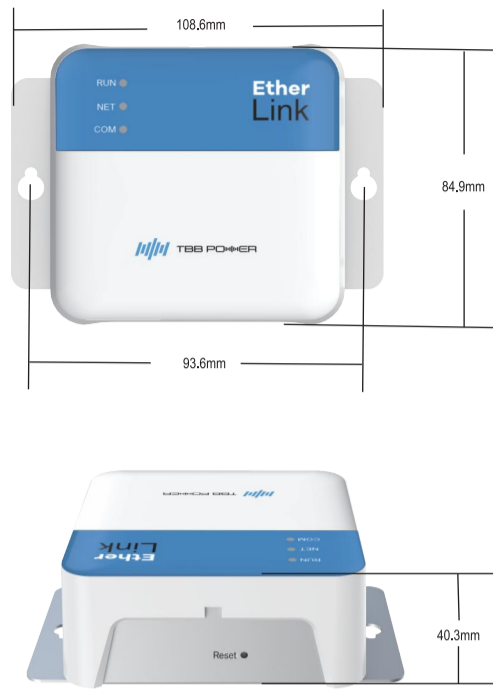


www.tbbrenewable.com



Chapter 1 Product Appearance

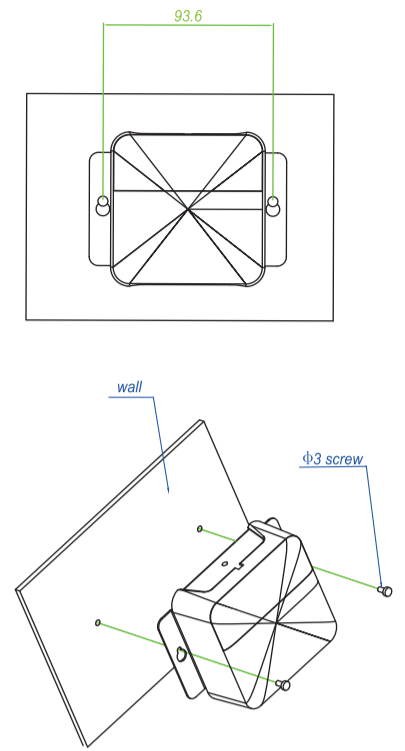
1.1 Product dimension diagram



2

1.2 Product installation diagram

As shown in the diagram below: before installation, it is necessary to first drill two $\phi 3$ screw holes in the wall with a spacing of 93.6mm, and then use the provided $\phi 3$ screws to secure this product to the wall.

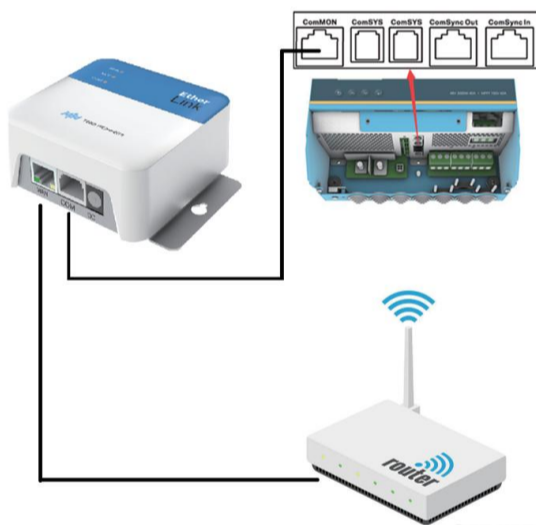


3

Chapter 2 Product Usage

2.1 Product wiring diagram

Step 1: Connect the Ether Link's COM port to the inverter's COMMON port using a network communication cable (cable already configured).
Step 2: Connect the Ether Link's WAN port to the router's LAN port using a network communication cable (cable setup required).

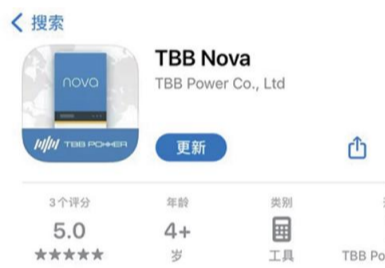


4

2.2 Network Configuration

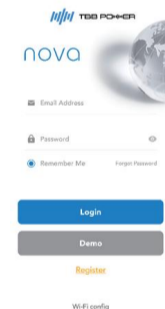
2.2.1 Preparation before Networking

The latest version of the app is available for download on various app stores. Android users can get the app on Google Play, and iOS users on the App Store.



2.2.2 App Registration

Step 1: Click "Register" on the login screen.



5

Step 1:

(1) Fill in the registration information.



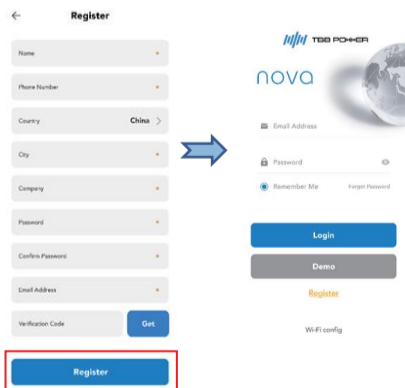
(2) Click the "Get" button and enter the received... verification code.



Note: The Nova platform will send the verification code to the registered email address. Please ensure that the email address is valid.

6

Step 3: Click the "Register" button. Automatic return to the login screen indicates successful registration.



2.2.3 Device Adding

Step 1: Click the "Login" button after entering the account (Email address) and the password.

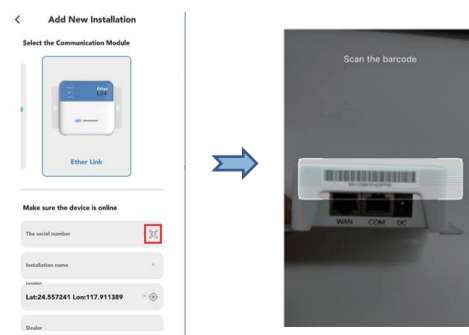


7

Step 2: After logging in, click on the "+" icon, which will take you to the "Add New Installation" page.

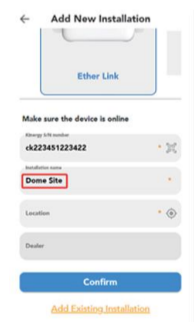


Step 3: Click the scan button to utilize the scanning function to scan the device's serial number, or you can manually input it. After the scanning is complete, please confirm whether the result matches the actual serial number.

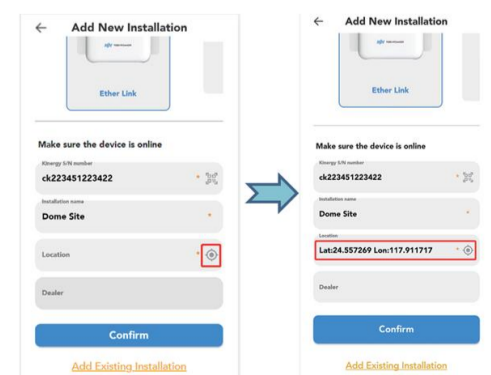


8

Step 4: Enter the Installation Name.

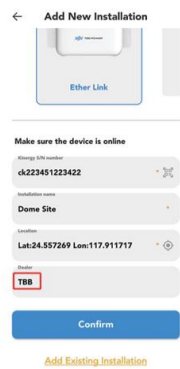


Step 5: Click the location icon to obtain the current location.

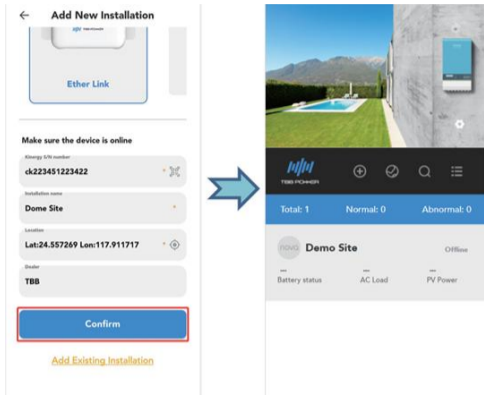


9

Step 6: Fill in the name of the dealer.



Step 7: Click the "Confirm" button to successfully add the device.

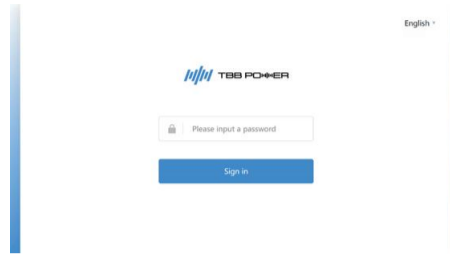


2.3 IP Address Configuration (Manual)

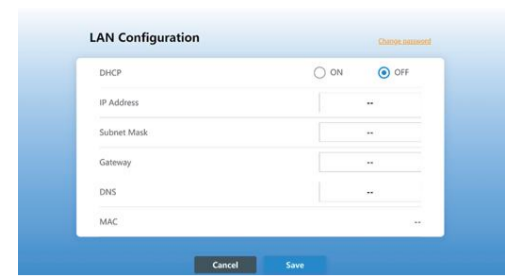
Note: The device is set to DHCP mode by default, enabling it to automatically acquire an IP address. It's not recommended to manually set the IP address unless necessary.

If you need to manually change the IP address, the steps are as follows:
 Step 1: Long-press the Reset button for 5 seconds to restore to factory settings.
 Step 2: After the network connection is established, use a browser to access 192.168.0.212 (default IP), enter the password "admin" (default), and click "Login".

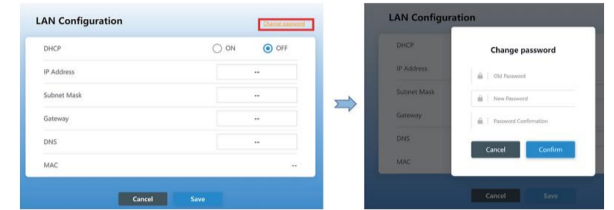
Note: The PC and Ether Link device need to be in the same network segment.



Step 3: System configuration. Modify LAN settings as needed.



Step 4: Click "Change password".



Chapter 3 Common Troubleshooting Analysis

3.1 Indicator Light Status Explanation

This product has three LED indicator lights on the panel, which are as follows:

Indicator Lights	Indicator Status	Function Description
RUN	Red light flashing	Null
	Red light steady on	Device booting
	Green light flashing	Program running normally
	Green light steady on	Null
	Off	Null
NET	Red light flashing	Not connected to the router or unable to access the internet
	Red light steady on	Connected to the router and internet accessible, device initializing
	Green light flashing	Server physical connection established, sending device information
	Green light steady on	System connected to the server normally
	Off	Null
COM	Red light flashing	Device communication abnormal
	Red light steady on	Device initializing
	Green light flashing	Updating device or checking device properties
	Green light steady on	Null
	Off	Device communication normal

Ether-Link has two LED indicator lights on the WAN interface, and their specific functions are as follows:

Indicator Lights	Indicator Status	Function Description
Link	Green light flashing	Null
	Green light steady on	Circuit connection normal
	Green light off	Circuit disconnected
ACK	Yellow light flashing	Signal normal, currently communicating
	Yellow light steady on	No communication
	Yellow light off	Circuit fault

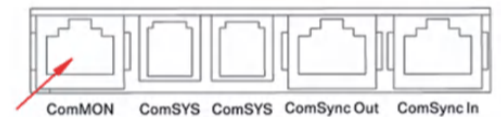
3.2 Device malfunction

3.2.1 Device unable to connect to Ether-Link's web page

1. Check the network status indicator light and confirm whether the network communication cable is connected properly.
2. Log in to the router and check if the router device is connected to the internet properly.

3.2.2 The device is connected to Ether-Link's web page but unable to update data.

Please confirm the device model and its corresponding interface definitions with the TBB after-sales team. Interface definitions are typically as follows:



3.3 Encountering failure when adding the device to the app

Please verify if the entered serial number is correct. The serial number should consist of 14 digits. Product rendering with S/N serial number



The serial number in the picture can be entered manually.

Chapter 4 Technical Specification Table

Interface			
Ethernet Port	10/100 Mbps fast Ethernet port, WAN x 1; RJ45 jack		
Industrial Serial Interface	RS-485/CAN x 1; RJ45 jack		
Power Interface	DC12V, ±20% deviation; DC005-2.1 DC power jack		
Reset Button	Pinhole reset button		
Ground Terminal	Null		
Mechanical Characteristics			
Dimension	84.92*108.6*40.3mm	Weight	115g
Casing	Plastic, metal	Cooling Method	Fanless
Device Power			
Standby Power	1.0W@12V		
Operating Power	1.2W@12V		
Peak Power	1.4W@12V		
Ambient Temperature and Humidity			
Storage Temperature	-40 ~ 85°C		
Ambient Humidity	Environmental Humidity: 5 ~ 95% (Non-condensing)		
Operating Temperature	-20 ~ 65°C		

TBB Renewable (Xiamen) Co., Ltd.

✉ TBBsupport@tbbrenewable.com

🌐 www.tbbrenewable.com

☎ +86-592-5796068 / 5796287

📠 +86-592-5796070